

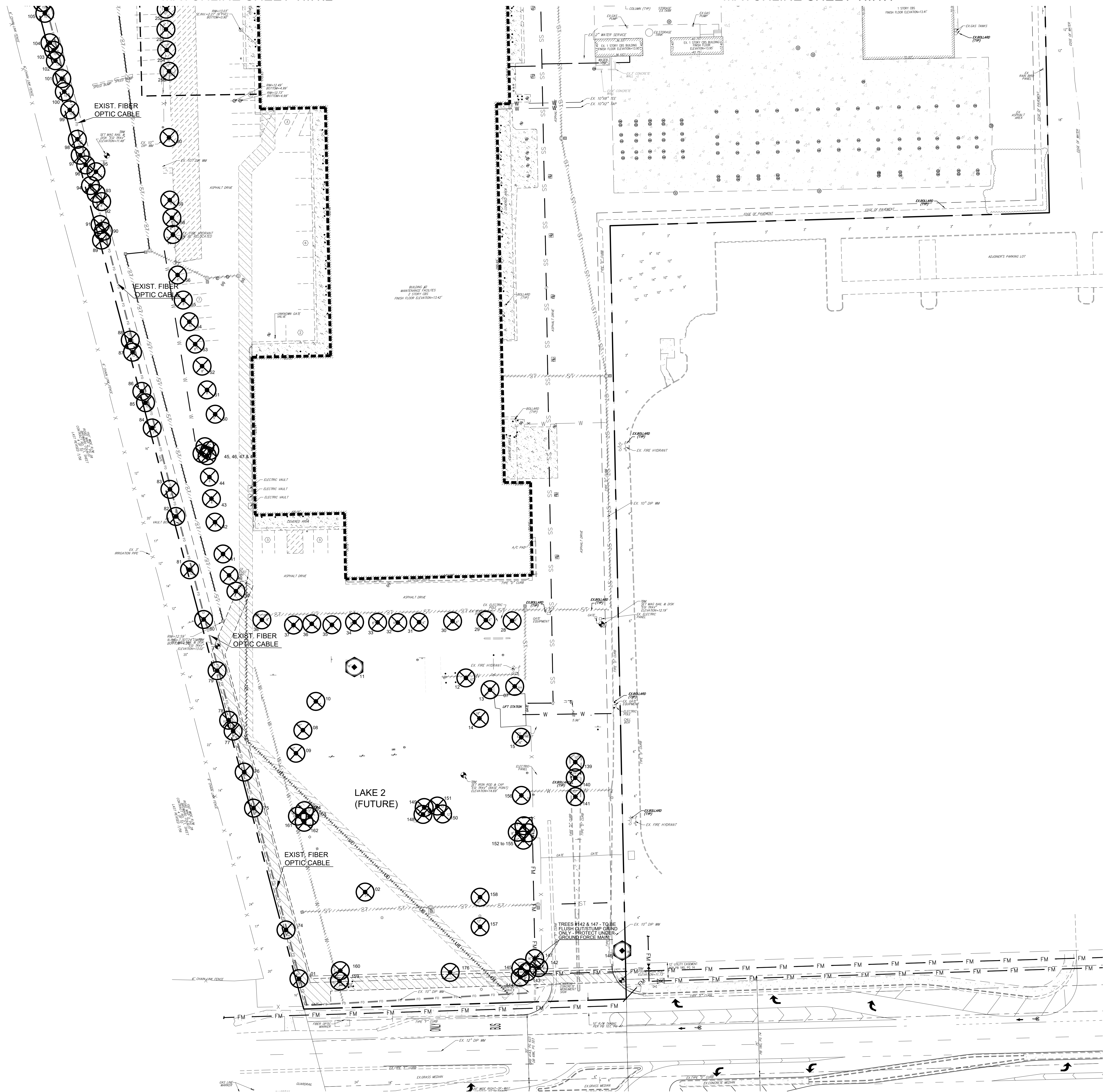
DRC

PZ25- 12000042
12/17/2025

FLORIDAS TURNPIKE
(STATE ROAD 91)

MATCHLINE SHEET TM1.2

MATCHLINE SHEET TM1.1



LEGEND:

- 000 TREE TO BE SAVED
- 000 TREE TO BE RELOCATED
- 000 TREE TO BE REMOVED
- R-000 RELOCATED TREE
- RELOCATED SABAL PALM
(NUMBERS NOT PROVIDED ON
PLAN-SEE DISPOSITION LIST)

EXISTING ON-SITE TREES OR PALMS
BEYOND LIMITS OF CONSTRUCTION.

- 000 EXISTING
LARGE TREE
- 000 EXISTING
ORNAMENTAL TREE
- 000 EXIST. PALM

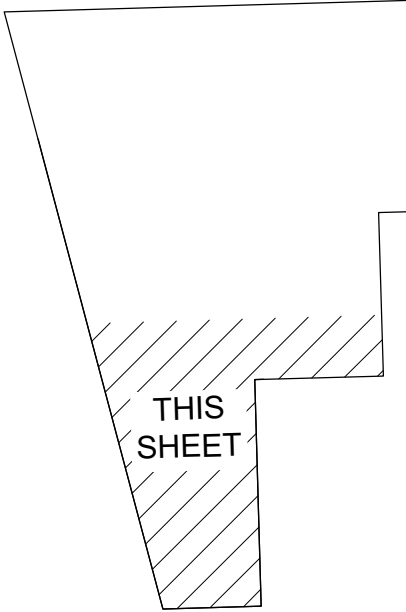
CLIENT
Broward County
Transit
1 N University Dr, Plantation, FL, 33324

COPYRIGHT
This drawing has been prepared solely for the intended use, thus any reproduction or distribution for any purpose other than authorized by Arcadis is forbidden. Written dimensions shall have precedence over scaled dimensions. Contractors shall verify and be responsible for all dimensions and conditions on the job, and Arcadis shall be informed of any variations from the dimensions and conditions shown on the drawing. Shop drawings shall be submitted to Arcadis for general conformance before proceeding with fabrication.

Arcadis Professional Services (USA) Inc.

ISSUES		
No.	DESCRIPTION	DATE
B	DD RELEASE	2024-03-29
C	DRC RELEASE	2024-05-29
D	50% CD QA/QC RELEASE	2024-06-28
D	50% CD PRICING RELEASE	2024-07-17
D	50% CD BCT RELEASE	2024-07-29
E	DRC RESUBMITTAL	2024-08-14
E-1	DRC #2 RELEASE	2024-10-02
F	DRC #3 RESUBMITTAL	2024-11-13
G	100% CD RELEASE	2024-12-16

KEYPLANS



CONSULTANTS

ARCHITECT:	CIVIL ENGINEER:
ARCADIS 7000 N FEDERAL HWY., 3RD FLOOR BOCA RATON, FL 33487 (561) 394-5500 contact: THREM SHAH email: threm.shah@arcadis.com	ARCADIS 7000 N FEDERAL HWY., 3RD FLOOR BOCA RATON, FL 33487 (561) 394-5500 contact: PATRICIA RAMALHO email: patricia.ramalho@arcadis.com
LANDSCAPE PLACEMAKING:	SITE ELECTRICAL:
ARCADIS 24 CUSTON HOUSE ST., 3RD FLOOR BOSTON, MA 02115 (857) 596-2000 contact: PAUL COLLIERAN email: paul.colleran@arcadis.com	ARCADIS 421 FAYETTEVILLE STREET SUITE 312 RALEIGH, NC 27601 (919) 851-4211 contact: KEVIN SCHAEFER email: kevin.schaefer@arcadis.com

STRUCTURAL ENGINEER:

LANDSCAPE ARCHITECTURE:	MEP/E:
LANDSCAPE ARCHITECTURE ENGINEERING INC. 2211 NE 54TH STREET FORT LAUDERDALE, FL 33308 (954) 771-0000 contact: LINDA NANNAYAKKARA email: lyn@landscapeengineering.com	SMITH ENGINEERING CONSULTANTS 2161 PALM BEACH LAKES BLVD SUITE 312 WEST PALM BEACH, FL 33411 (561) 616-3011 contact: STEVE P. HODGMAN email: shv@smithengineeringconsultants.com

SEAL

NOT TO BE FILED FOR RECORD UNLESS SIGNED AND DATED
WITH THE ORIGINAL SEAL OF DESIRAL L. HERNANDEZ
FLORIDA L.A. #6666975 FOR THE FIRM

PRIME CONSULTANT

ARCADIS
7000 N Federal Highway
Boca Raton, FL 33487 USA
tel: 561 393 6555
www.arcadis.com

ENGINEER'S CERT. OF AUTH. #0086
LANDSCAPE L.C. #00000270

PROJECT
**COPANS TRANSIT
OPERATIONS FACILITY**
3201 W Copans Road
Pompano Beach, FL

PROJECT NO:
136677
DRAWN BY:
DLH
CHECKED BY:
PC/KS
SCALE:
1" = 30'
APPROVED BY:
DLH

SHEET TITLE
TREE MANAGEMENT PLAN S

SHEET NUMBER
TM1.3
ISSUE
G

